

# ONE SUNSET AVENUE

BLOCK 303, LOT 4  
1 SUNSET AVENUE  
VERONA, NJ 07044

## MATERIALS BOOK



Date: 12/17/2021

**MINNO WASKO**  
ARCHITECTS AND PLANNERS  
80 LAMBERT LANE, SUITE 105, LAMBERTVILLE, NEW JERSEY 08530 MINNOWASKO.COM  
TWO GATEWAY CENTER, SUITE 1700, NEWARK, NEW JERSEY 07102  
COPYRIGHT © MINNO & WASKO ARCHITECTS AND PLANNERS



## BRICK VENEER A

**Color: Red**

**Texture: Smooth**

or approved equal by Architect



## BRICK VENEER B

**Color: Black**

**Texture: Smooth**

or approved equal by Architect



## BRICK VENEER C

**Color: Gray**

**Texture: Velour**

or approved equal by Architect

### ONE SUNSET AVE

BLOCK 303, LOT 4  
1 SUNSET AVENUE,  
VERONA, NJ 07044

Date: 12/17/2021

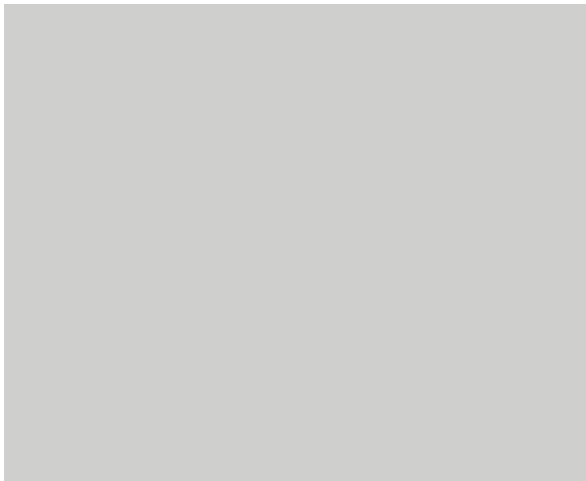
**MINNO WASKO**

ARCHITECTS AND PLANNERS

80 LAMBERT LANE, SUITE 105, LAMBERTVILLE, NEW JERSEY 08530 MINNOWASKO.COM

TWO GATEWAY CENTER, SUITE 1700, NEWARK, NEW JERSEY 07102

COPYRIGHT © MINNO & WASKO ARCHITECTS AND PLANNERS



## CEMENTITIOUS PANEL A

**Color: Light Mist**

**Texture: Smooth**

or approved equal by Architect



## CEMENTITIOUS PANEL B

**Color: Gray Slate**

**Texture: Smooth**

or approved equal by Architect



## CEMENTITIOUS PANEL C

**Color: Iron Grey**

**Texture: Smooth**

or approved equal by Architect

**ONE SUNSET AVE**

BLOCK 303, LOT 4  
1 SUNSET AVENUE,  
VERONA, NJ 07044

Date: 12/17/2021

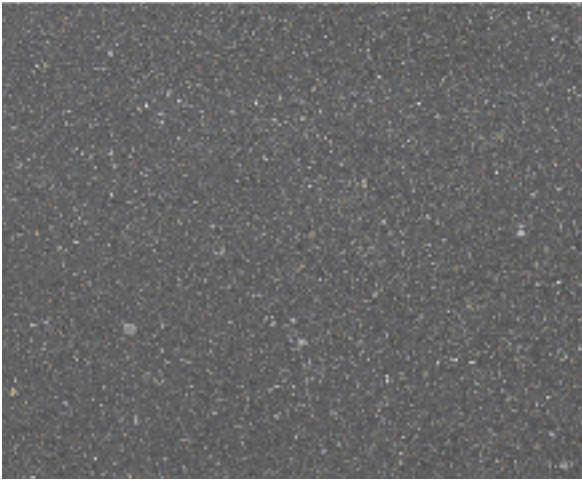
**MINNO WASKO**

ARCHITECTS AND PLANNERS

80 LAMBERT LANE, SUITE 105, LAMBERTVILLE, NEW JERSEY 08530 MINNOWASKO.COM

TWO GATEWAY CENTER, SUITE 1700, NEWARK, NEW JERSEY 07102

COPYRIGHT © MINNO & WASKO ARCHITECTS AND PLANNERS



## CAST STONE

**Color: Dark Grey**

or approved equal by Architect

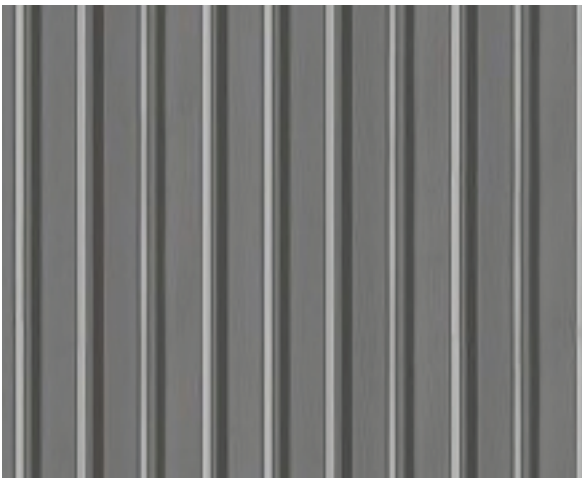


## COMPOSITE FIBER CEMENT LAP SIDING

**Color: Light Mist**

**Texture: Smooth**

or approved equal by Architect



## CORRUGATED METAL

**Color: Grey**

or approved equal by Architect

### ONE SUNSET AVE

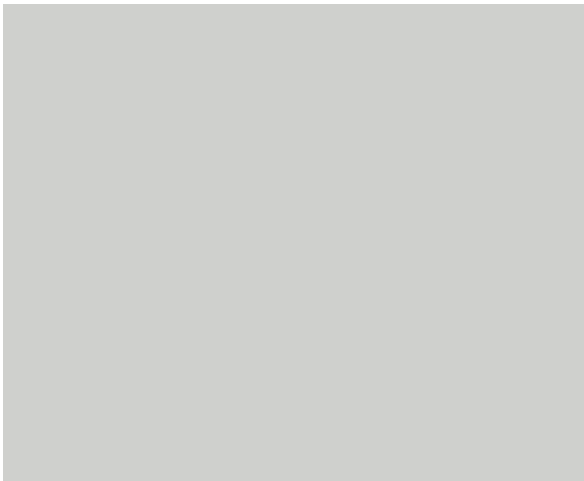
BLOCK 303, LOT 4  
1 SUNSET AVENUE,  
VERONA, NJ 07044

Date: 12/17/2021

**MINNO**  **WASKO**  
ARCHITECTS AND PLANNERS

80 LAMBERT LANE, SUITE 105, LAMBERTVILLE, NEW JERSEY 08530 MINNOWASKO.COM  
TWO GATEWAY CENTER, SUITE 1700, NEWARK, NEW JERSEY 07102  
COPYRIGHT © MINNO & WASKO ARCHITECTS AND PLANNERS





# COMPOSITE METAL PANEL A

**Color: Light Mist**  
or approved equal by Architect



# COMPOSITE METAL PANEL B

**Color: Gray Slate**  
or approved equal by Architect



# COMPOSITE METAL PANEL C

**Color: Iron Grey**  
or approved equal by Architect

**ONE SUNSET AVE**  
BLOCK 303, LOT 4  
1 SUNSET AVENUE,  
VERONA, NJ 07044

Date: 12/17/2021

**MINNO**  **WASKO**  
ARCHITECTS AND PLANNERS  
80 LAMBERT LANE, SUITE 105, LAMBERTVILLE, NEW JERSEY 08530 MINNOWASKO.COM  
TWO GATEWAY CENTER, SUITE 1700, NEWARK, NEW JERSEY 07102  
COPYRIGHT © MINNO & WASKO ARCHITECTS AND PLANNERS



## COMPOSITE WOOD

**Color: Pecan**

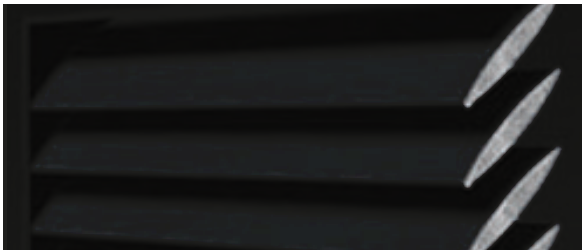
or approved equal by Architect



## ALUMINUM RAILING

**Color to match Dark Metal Panel**

or approved equal by Architect



## LOUVER

**Color to match Dark Metal Panel**

or approved equal by Architect



## ARCHITECTURAL METAL CANOPY

**Color to match Dark Metal Panel**

or approved equal by Architect

### ONE SUNSET AVE

BLOCK 303, LOT 4  
1 SUNSET AVENUE,  
VERONA, NJ 07044

Date: 12/17/2021

**MINNO WASKO**

ARCHITECTS AND PLANNERS

80 LAMBERT LANE, SUITE 105, LAMBERTVILLE, NEW JERSEY 08530 MINNOWASKO.COM

TWO GATEWAY CENTER, SUITE 1700, NEWARK, NEW JERSEY 07102

COPYRIGHT © MINNO & WASKO ARCHITECTS AND PLANNERS